

Shannon Farm

CENTRAL OTAGO LAKES

Make your lifestyle your home

shannonfarm.co.nz

Welcome

Waiting for you to build your lifestyle

Nestled behind vineyards, cherry orchards and framed by the majestic Pisa Range is Central Otago Lakes newest lifestyle subdivision, Shannon Farm.

This spacious and unique rural subdivision offers secluded lifestyle block living only minutes from Cromwell & the shores of Lake Dunstan.

Shannon Farm is well positioned in the desirable Central Otago Lakes amongst all that the region has to offer, from its world-class vineyards, biking trails and ski fields to popular Wanaka, Queenstown and Clyde townships.

Enjoy the gentler pace of life on your own spacious lifestyle section, surrounded by the outstanding natural beauty that can only be found in Central Otago Lakes.





Cardrona

Wanaka

SH6

Lake Dunstan

Unique location respectfully developed

Shannon Farm

Ripponvale Road

Cromwell town centre

S

artists impression only

So much to discover in your own backyard



- Bannockburn Wineries 10 minutes
- Cromwell Town Centre 4 minutes
- Queenstown Airport 45 minutes
- Lake Wanaka 45 minutes
- Coronet Peak Ski Area 60 minutes
- Lake Dunstan Cycle Trail 8 minutes
- Arrowtown Village 40 minutes
- Shannon Farm Mountain Bike Park 2 minutes



A breathtaking place to live & play

Hot dry summers and crisp blue sky winters, Central Otago Lakes has the perfect balance.

Majestic scenery can be found in every corner of this sought after region.

Ski or mountain bike every weekend, enjoy the fine dining in Queenstown, the world class golf courses in Arrowtown or visit award-winning wineries by bike. There is even a motorsport track.

There is always something to explore and enjoy, all year round.





Steeped in history

Gold was discovered in the Cromwell Gorge by two miners called Horatio Hartley and Christopher Reilly in 1862.

As soon as word spread (and it did), the gold rush began in the mining town of The Junction (named after its physical location of where the Kawerau and Clutha Rivers meet) was founded. One year later, the small town was renamed Cromwell after the English leader Oliver Cromwell.

Goldmining by individual miners soon turned into large scale mechanical dredging and by the early 1900's the gold rush did eventually come to an end, but not before miners had spread out across Central Otago. You can still find remnants of its past in settlements such as Bannockburn and Bendigo.



Sourced from Hocken Collections, Uare Taoka o Hakena, University of Otago

Our vision

Make your lifestyle your home.

Shannon Farm is a spacious lifestyle subdivision grounded within its natural context, and provides its residents with a cohesive and high-quality backdrop, ready to build their lifestyle.

Shannon Farm developers will respectfully maintain its visual character and landscape quality through a set of design controls.



S

artists impression only



artists impression only

Make your lifestyle your home

Shannon Farm is a spacious and unique subdivision set in a rural landscape amongst 142 hectares of rolling hills and fields. Each section has stunning alpine views.

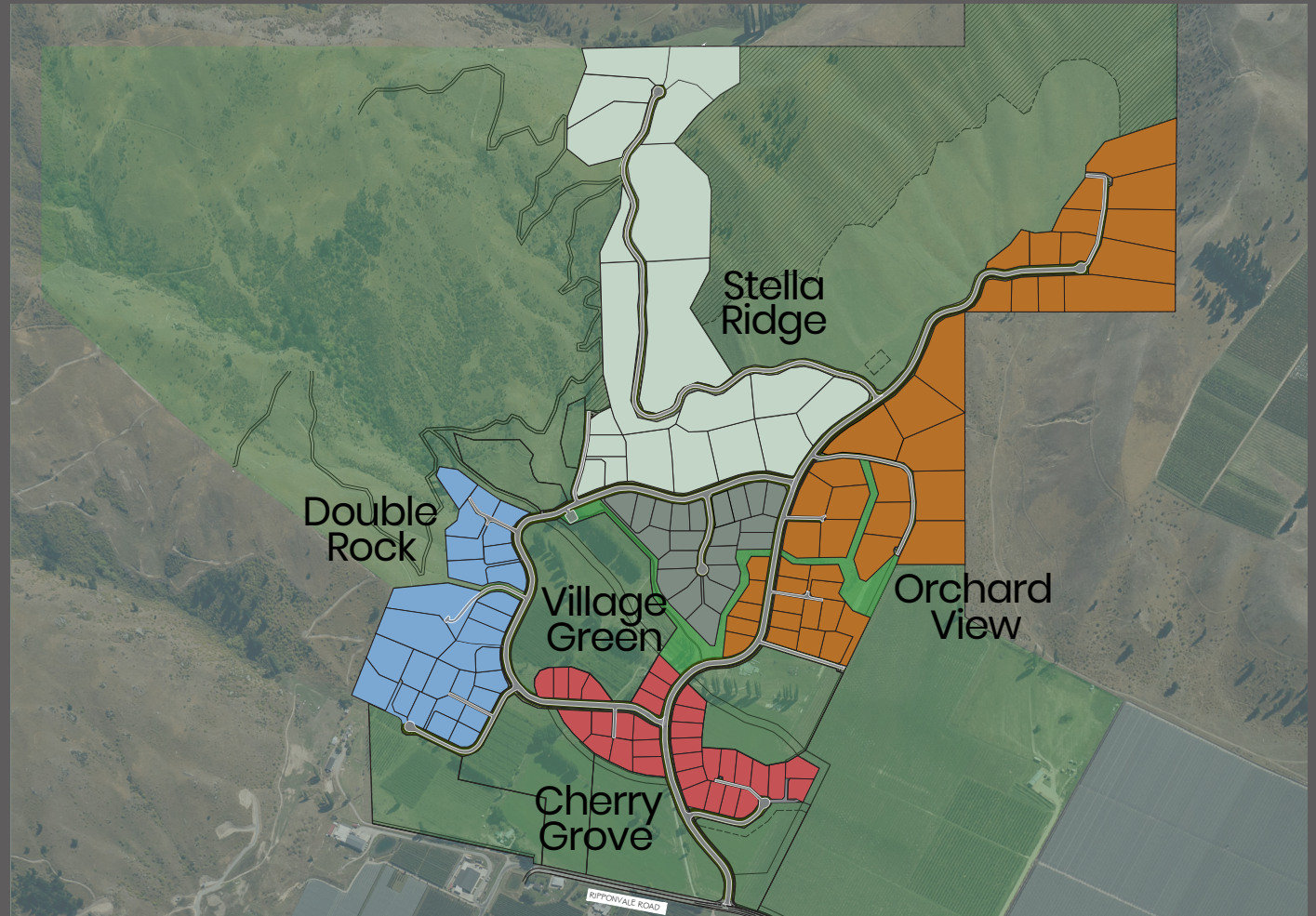
The developer has taken great care with the design of the subdivision and this is shown by its larger sections and generous green spaces.

There are 160 sections available, ranging from 1,500m² to over 3ha.

Five neighbourhoods have been created, all with their own unique qualities:

- Cherry Grove
- Orchard View
- Village Green
- Double Rock
- Stella Ridge

To ensure Shannon Farm stays sympathetic to its rural surroundings, design guidelines have been developed.

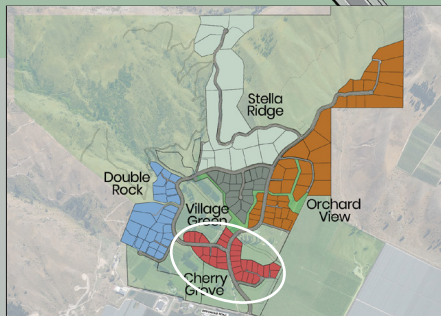
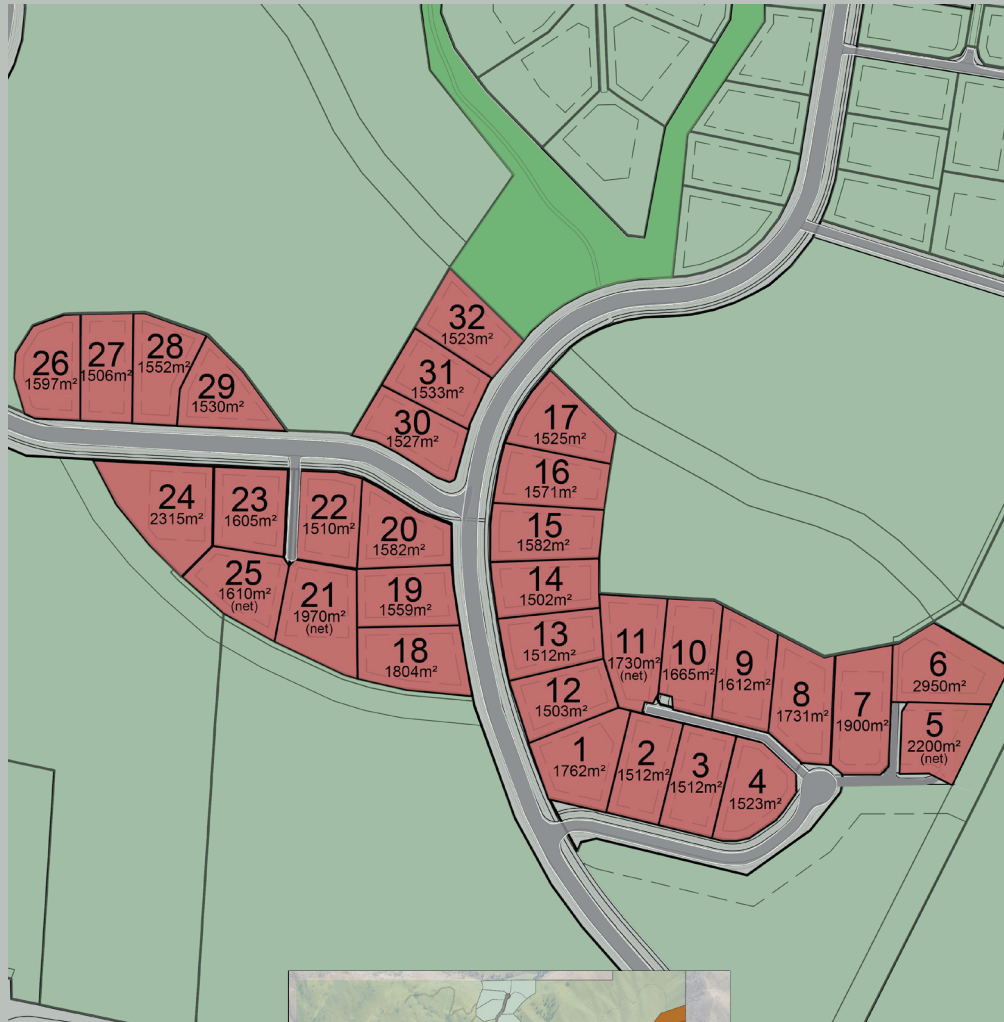


Cherry Grove

Shannon Farm was originally a grazing area called The Commonage, but grazing soon turned to stone fruit orchards. The most popular stone fruit grown in this area is cherry.

Cherry Grove is located at the entrance to Shannon Farm and sections range from 1,502m² to 2,950m². All sections in this neighbourhood have a gentle sloping contour and get all day sun.

Sections are now available for sale in Cherry Grove.



Lot number	Lot size	Availability
1	1,762m ²	SOLD
2	1,512m ²	SOLD
3	1,512m ²	SOLD
4	1,523m ²	SOLD
5	2,200m ² (net)	SOLD
6	2,950m ²	SOLD
7	1,900m ²	SOLD
8	1,731m ²	SOLD
9	1,612m ²	SOLD
10	1,665m ²	FOR SALE
11	1,730m ² (net)	SOLD
12	1,503m ²	SOLD
13	1,512m ²	SOLD
14	1,502m ²	SOLD
15	1,582m ²	SOLD
16	1,571m ²	SOLD

Lot number	Lot size	Availability
17	1,525m ²	SOLD
18	1,804m ²	SOLD
19	1,559m ²	SOLD
20	1,582m ²	SOLD
21	1,970m ² (net)	FOR SALE
22	1,510m ²	SOLD
23	1,605m ²	SOLD
24	2,315m ²	FOR SALE
25	1,610m ² (net)	SOLD
26	1,597m ²	SOLD
27	1,506m ²	FOR SALE
28	1,552m ²	SOLD
29	1,530m ²	FOR SALE
30	1,527m ²	SOLD
31	1,533m ²	SOLD
32	1,523m ²	SOLD



Subject to final approval of the Central Otago District Council and the developer, subject to survey. Dimensions, details and timing of the development are all subject to change. Prices and availability are subject to change at any time.

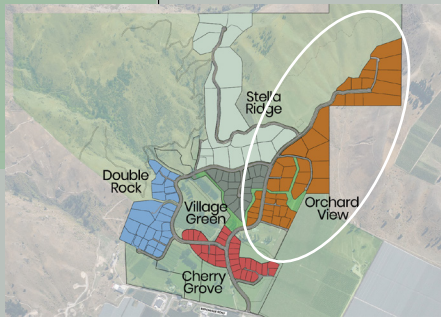
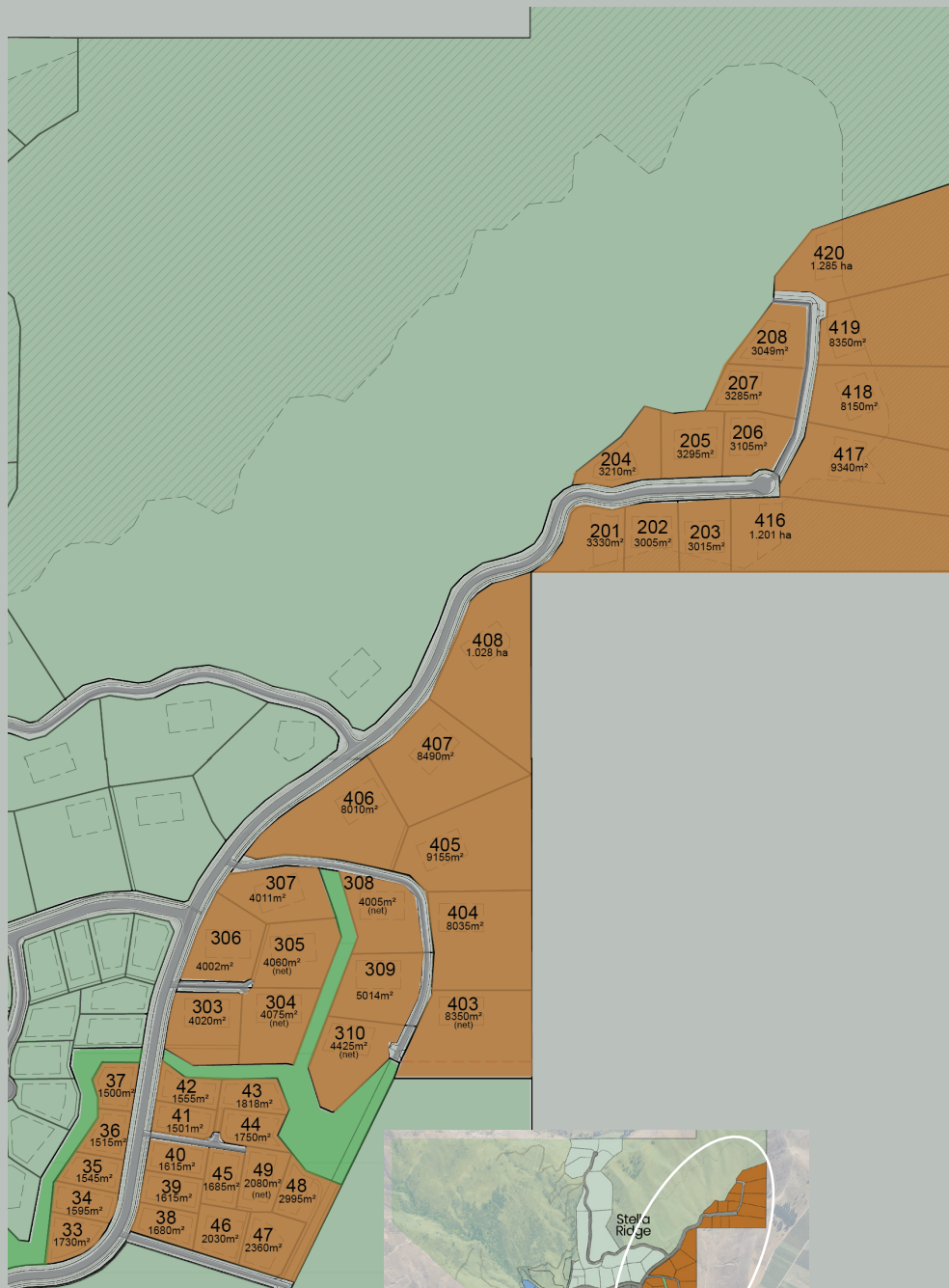
Orchard View

Orchard View offers a unique mix of striking sections, all with varying contours and elevations. Average section size is over 4,700m².

First sections are now available - further sections will become available in staged releases.

Lot number	Lot size	Availability
33	1,730m ²	N/A
34	1,595m ²	N/A
35	1,545m ²	N/A
36	1,515m ²	N/A
37	1,500m ²	N/A
38	1,680m ²	FOR SALE
39	1,615m ²	SOLD
40	1,615m ²	FOR SALE
41	1,501m ²	FOR SALE
42	1,555m ²	FOR SALE
43	1,818m ²	SOLD
44	1,750m ²	FOR SALE
45	1,685m ²	FOR SALE
46	2,030m ²	SOLD
47	2,360m ²	SOLD
48	2,995m ²	N/A
49	2,080m ² (net)	N/A
201	3,330m ²	N/A
202	3,005m ²	N/A
203	3,015m ²	N/A
204	3,210m ²	N/A
205	3,295m ²	N/A

Lot number	Lot size	Availability
206	3,105m ²	N/A
207	3,285m ²	N/A
208	3,049m ²	N/A
303	4,020m ²	N/A
304	4,075m ² (net)	N/A
305	4,060m ² (net)	N/A
306	4,002m ²	N/A
307	4,011m ²	N/A
308	4,005m ² (net)	N/A
309	5,014m ²	N/A
310	4,425m ² (net)	N/A
403	8,350m ² (net)	N/A
404	8,035m ²	N/A
405	9,155m ²	N/A
406	8,010m ²	N/A
407	8,490m ²	N/A
408	1.028 ha	N/A
416	1.201 ha	N/A
417	9,340m ²	N/A
418	8,150m ²	N/A
419	8,350m ²	N/A
420	1.285 ha	N/A



Subject to final approval of the Central Otago District Council and the developer, subject to survey. Dimensions, details and timing of the development are all subject to change. Prices and availability are subject to change at any time.



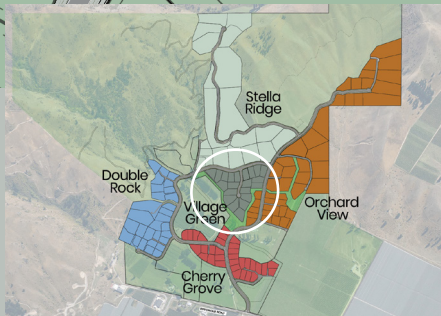
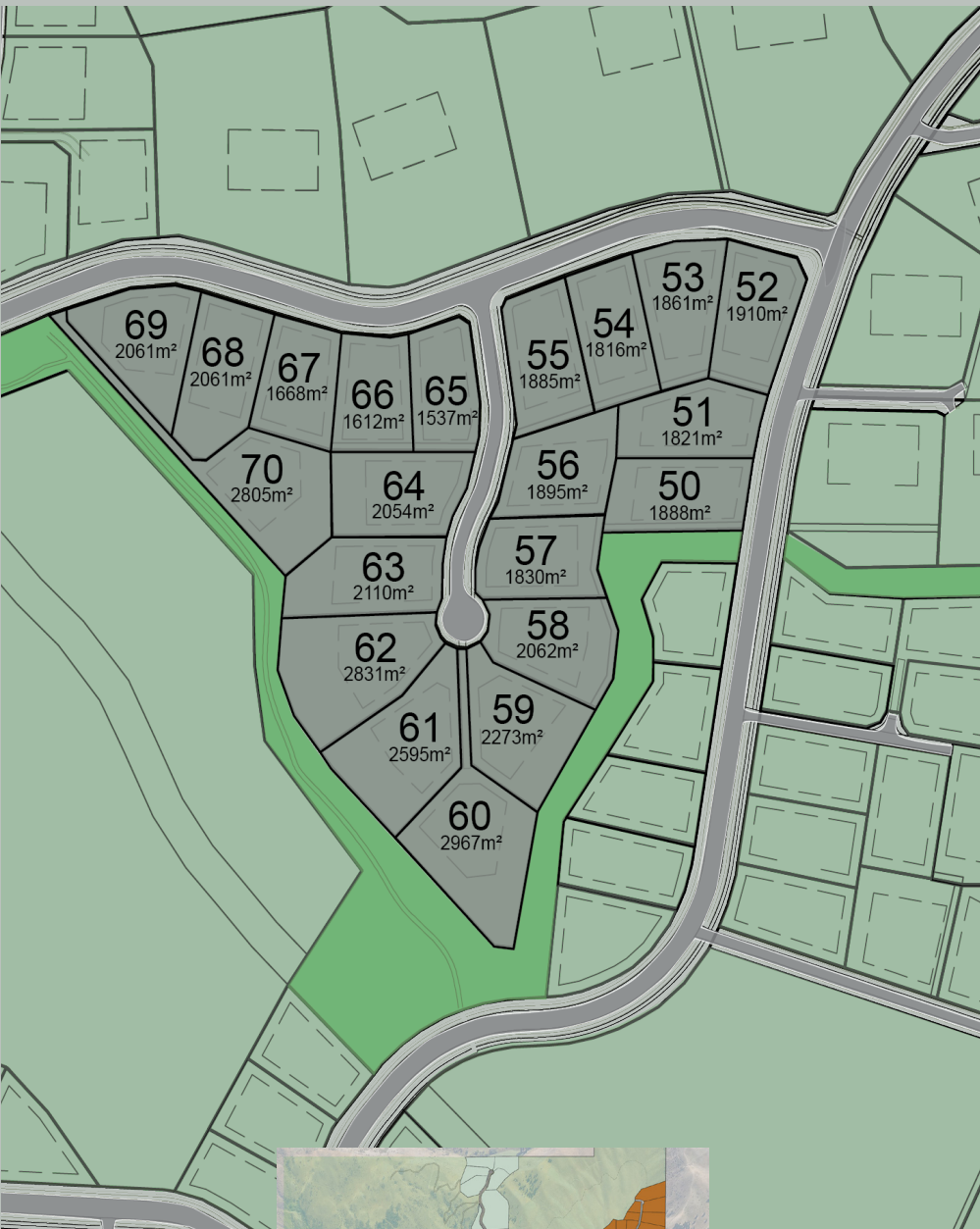
Village Green

Village Green is located at the heart of Shannon Farm with 14 sections bordering onto a nature reserve and park. Sections range from 1,537m² to 2,967m² and have a slight elevated contour.

Sections will become available in staged releases.

Lot number	Lot size	Availability
50	1,888m ²	N/A
51	1,821m ²	N/A
52	1,910m ²	N/A
53	1,861m ²	N/A
54	1,816m ²	N/A
55	1,885m ²	N/A
56	1,895m ²	N/A
57	1,830m ²	N/A
58	2,062m ²	N/A
59	2,273m ²	N/A
60	2,967m ²	N/A

Lot number	Lot size	Availability
61	2,595m ²	N/A
62	2,831m ²	N/A
63	2,110m ²	N/A
64	2,054m ²	N/A
65	1,537m ²	N/A
66	1,612m ²	N/A
67	1,668m ²	N/A
68	2,061m ²	N/A
69	2,061m ²	N/A
70	2,805m ²	N/A



Subject to final approval of the Central Otago District Council and the developer, subject to survey. Dimensions, details and timing of the development are all subject to change. Prices and availability are subject to change at any time.



Double Rock

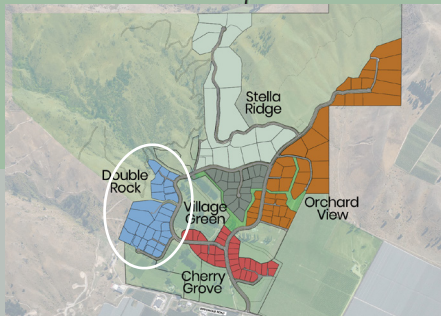
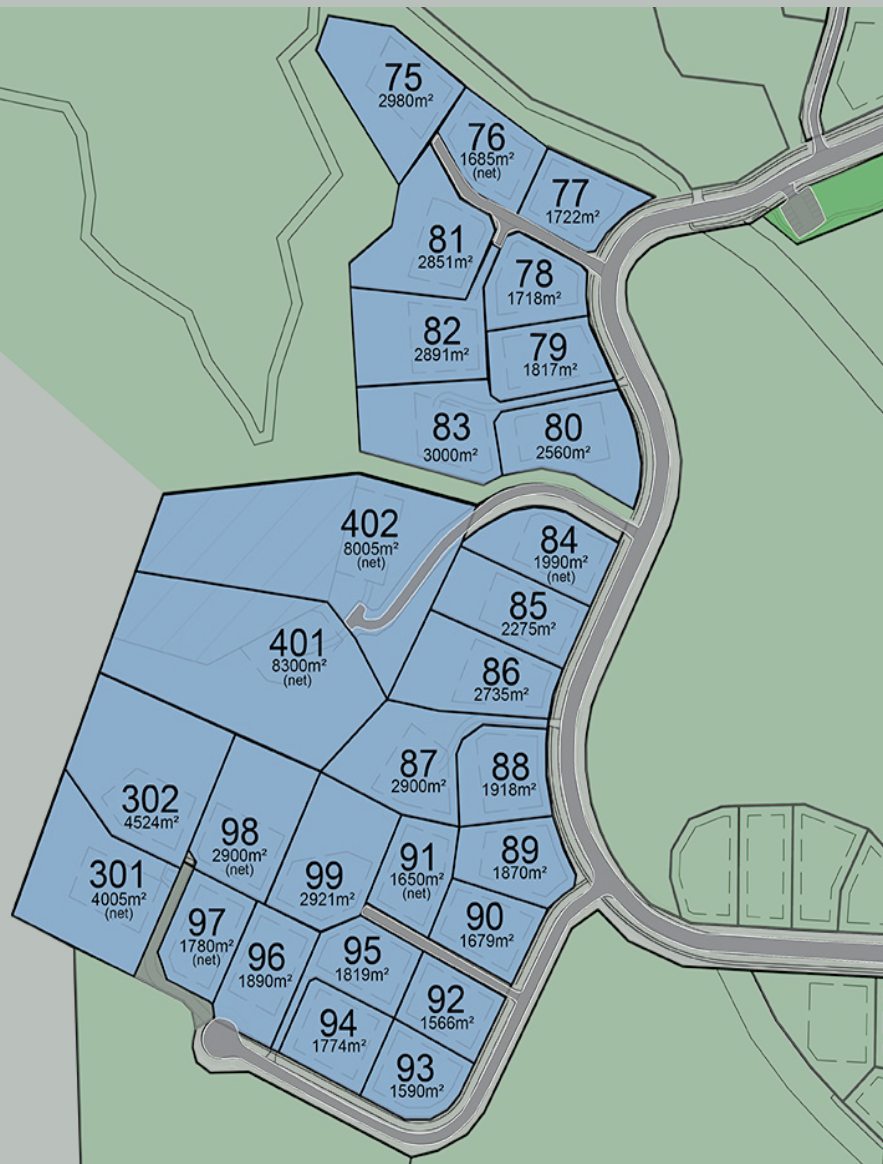
Double Rock sits proudly above Ripponvale Road overlooking Cromwell and the historic goldmining gorges beyond.

Located on the western side of Shannon Farm, Double Rock has a mixture of lower level and elevated sections, all with envious sunrise views. Sections range from 1,566m² to 8,300m².

Sections will become available in staged releases.

Lot number	Lot size	Availability
75	2,980m ²	N/A
76	1,685m ² (net)	N/A
77	1,722m ²	N/A
78	1,718m ²	N/A
79	1,817m ²	N/A
80	2,560m ²	N/A
81	2,851m ²	N/A
82	2,891m ²	N/A
83	3,000m ²	N/A
84	1,990m ² (net)	N/A
85	2,275m ²	N/A
86	2,735m ²	N/A
87	2,900m ²	N/A
88	1,918m ²	N/A
89	1,870m ²	N/A

Lot number	Lot size	Availability
90	1,679m ²	N/A
91	1,650m ² (net)	N/A
92	1,566m ²	N/A
93	1,590m ²	N/A
94	1,774m ²	N/A
95	1,819m ²	N/A
96	1,890m ²	N/A
97	1,780m ² (net)	N/A
98	2,900m ² (net)	N/A
99	2,921m ²	N/A
301	4,005m ² (net)	N/A
302	4,524m ²	N/A
401	8,300m ²	N/A
402	8,005m ² (net)	N/A



Subject to final approval of the Central Otago District Council and the developer, subject to survey. Dimensions, details and timing of the development are all subject to change. Prices and availability are subject to change at any time.

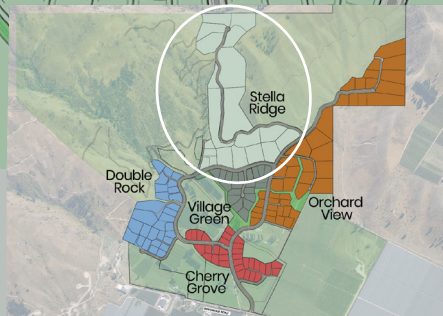
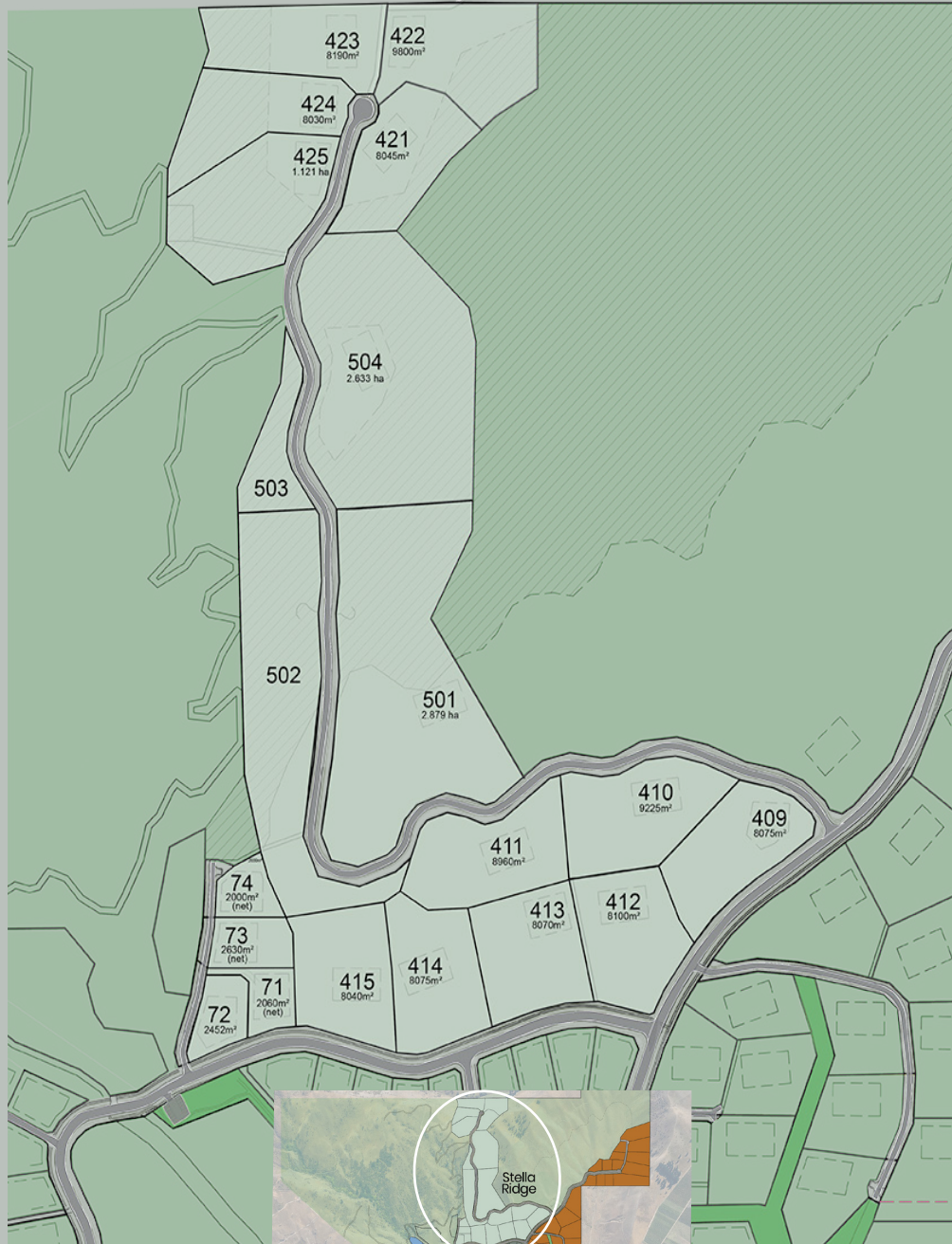
Stella Ridge

Stella Ridge borders with Village Green and Orchard View, then follows the valley north up towards Burn Cottage Road. Due to the elevation of these sections they have stunning alpine and valley views.

Sections will become available in staged releases.

Lot number	Lot size	Availability
71	2,060m ² (net)	N/A
72	2,452m ²	N/A
73	2,630m ² (net)	N/A
74	2,000m ² (net)	N/A
409	8,075m ²	N/A
410	9,225m ²	N/A
411	8,960m ²	N/A
412	8,100m ²	N/A
413	8,070m ²	N/A

Lot number	Lot size	Availability
414	8,075m ²	N/A
415	8,040m ²	N/A
421	8,045m ²	N/A
422	9,800m ²	N/A
423	8,190m ²	N/A
424	8,030m ²	N/A
425	1.121 ha	N/A
501	2.879 ha	N/A
504	2.633 ha	N/A



Subject to final approval of the Central Otago District Council and the developer, subject to survey. Dimensions, details and timing of the development are all subject to change. Prices and availability are subject to change at any time.



S

The developer: Infinity Investment Group

"We don't just develop property, we develop real communities."

Wanaka-based Infinity Investment Group are the developers of Shannon Farm.

They are an award-winning property developer with over 20 years' experience in creating quality residential developments in Wanaka and Canterbury.

You don't need to go far in Wanaka to see the outstanding calibre of their subdivisions, with Peninsula Bay and Far Horizon Park as great examples.

Infinity Investment Group are thrilled to be back in Central Otago creating another exceptional development in the desirable Shannon Farm. NZ Cherry Corp (Leyser) LP is the owner of Shannon Farm, of which Infinity has 50% ownership.



Shannon Farm

Contact us today

Sales Manager. Patrick Waser
m. 027 442 2756 e. patrick@shannonfarm.co.nz

Sales Manager. Henry van der Velden
m. 027 434 5659 e. henry@shannonfarm.co.nz

Disclaimer:

Subject to final approval of the Central Otago District Council and the developer, subject to survey. Dimensions, details and timing of the development are all subject to change. Prices and availability are subject to change at any time. Prices include GST.

NZ Cherry Corp (Leyser) LP

shannonfarm.co.nz